

Increased Yields with Toptex Potato Protection Fabric



Properties and Benefits of Toptex

■ sheds rain water

- thereby protects the potatoes from rainfall

■ permeable to air and moist

- no condensation water
- the potatoes can dry off

■ levels extreme temperature differences

- protects from early frost*
- avoids excessive heating-up
- reduced decay and germination

*) At long-term extreme frost (below -5°C) we recommend an additional foil cover.

■ easily to install and handle

- no ridge channel necessary
- low weight
- can be handled easily even at windy weather

■ highest wind stability

- reduced security measures necessary

■ extremely high tear resistance

- does not tear even when exposed to strong wind

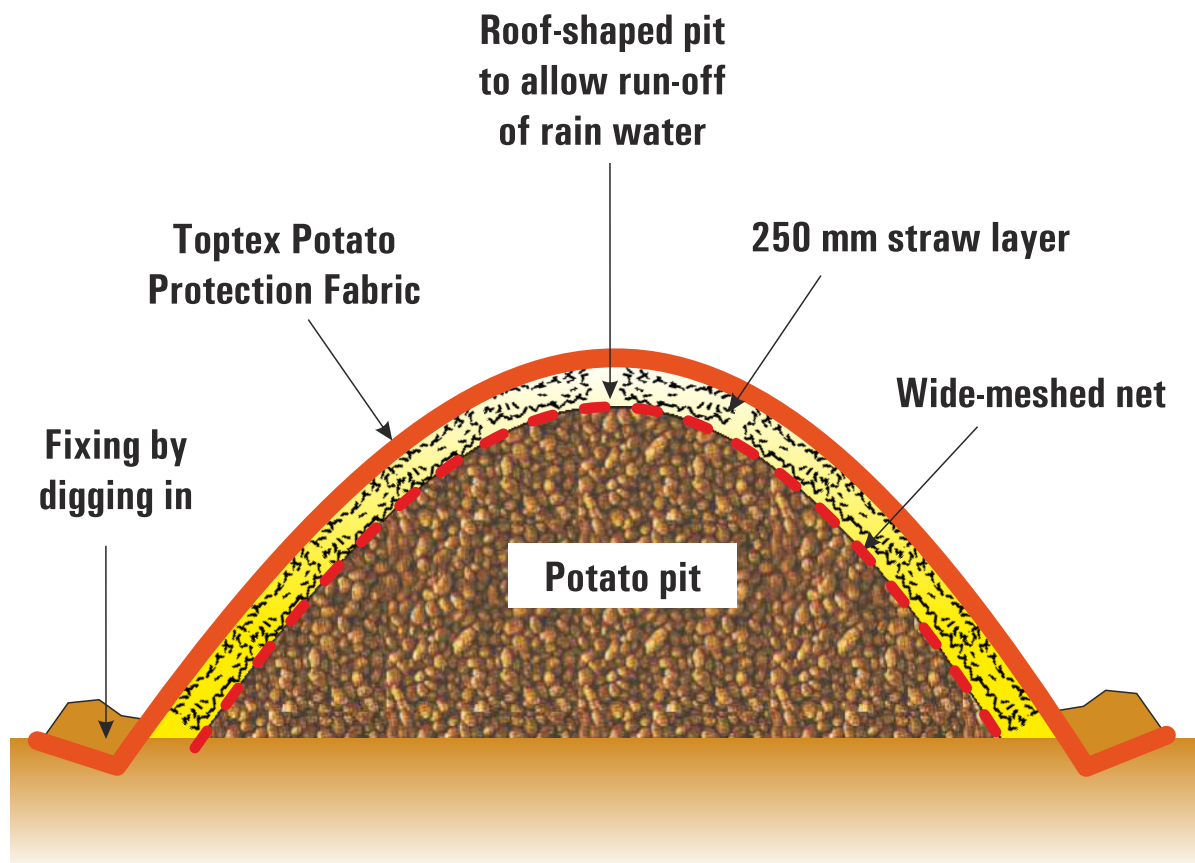
■ longevity

- 5 years life lime under normal conditions *

*) The lifetime can be increased when Toptex is protected from sunlight during storage.

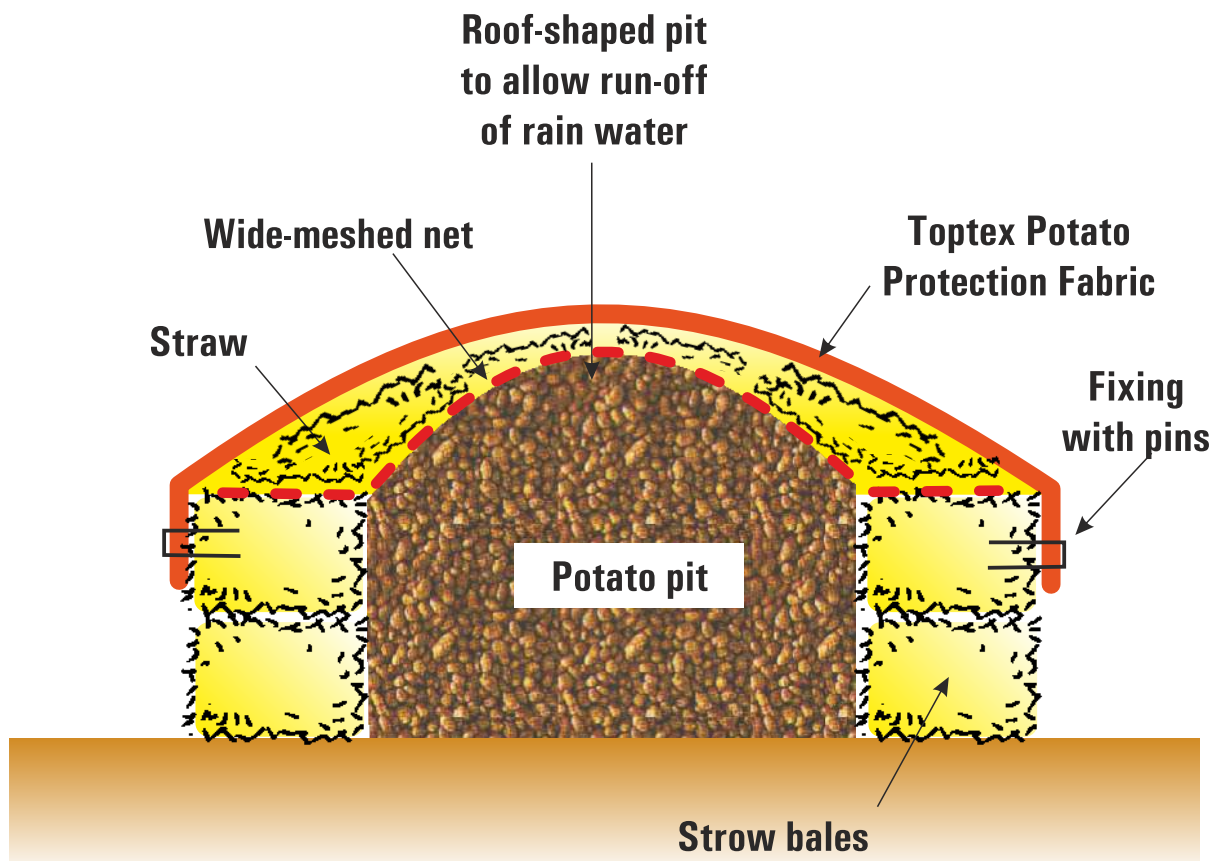
Basic Rules of Pit Construction

- roof-shaped pit, approx. 1.70 m high, 5 m base width
- avoid depressions in the pit, in which water could cumulate
- level possible unevennesses with a layer of straw
- tighten fabric securely
- at the toes of the pit, dig the fabric in and cover with earth or straw
- in the case of a longer frost period (below -5°C) cover additionally with a foil



Basic Rules of Pit Construction

- build up the longitudinal straw bale wall not too high
- roof-shaped pit
- level possible unevennesses with a layer of straw
- avoid steps or depressions in the pit, in which water could cumulate
- tighten fabric securely and fix with pins to the straw bales
- in the case of a longer frost period (below -5°C) cover additionally with a foil



Practical Experience

Practical test of pit covers of the Chamber of Agriculture Weser-Ems / Germany



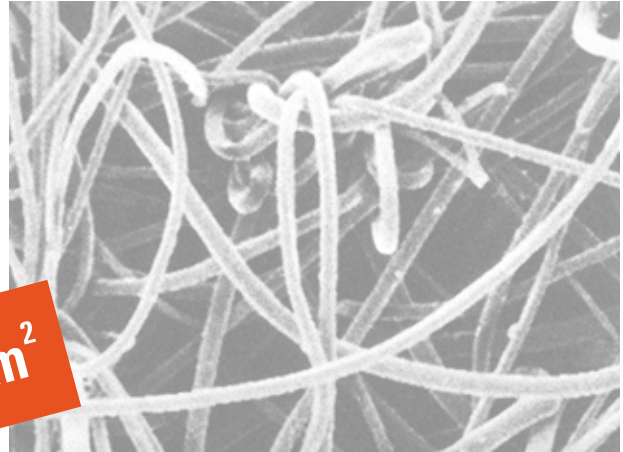
Pit with Topex nonwoven



Pits with foil covers are extremely prone to wind attack

Product Description

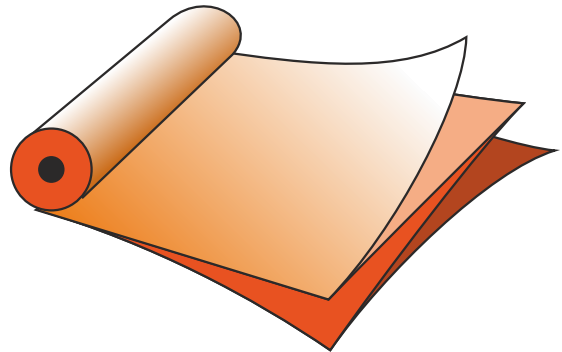
Toptex is a respirating nonwoven made from 100% decay resistant, continuous filaments from UV-stabilized polypropylene.



110 gr/m²

Dimensions

Width	9,80 m	9,80 m
Roll width	2,45 m	2,45 m
Length	12,5 m	25 m
Roll weight	appr. 17 kg	appr. 35 kg



The information given in this brochure is to the best of our knowledge true and correct, however new research results and practical experience can make revisions necessary. No guarantee or liability can be drawn from the information mentioned herein. Furthermore, it is not our intention to violate any patents or licences.

TENCATE GEOSYNTHETICS AUSTRIA GMBH
Schachermayerstr. 18, A-4021 Linz, Austria
Tel. +43 732 6983 0, Fax +43 732 6983 5353
service.toptex@tencate.com

507 523 | 02.2016
EN | AS.SH

Protective Fabrics
Outdoor Fabrics
Advanced Composites
Advanced Armour

Geosynthetics
Grass